



CANTILEVERS

A floor that sticks out past the foundation

Good examples-

- A good air barrier
 - Prevents unconditioned air from getting into house
- Foamed/caulked
 - ANY seams that can allow cold air in
- Bay filled with fiberglass/spray foam
 - Must be in contact with top & bottom of bay
- Under side of cantilever has foam board/ air barrier
 - More sealing to prevent air from coming in

Step :1



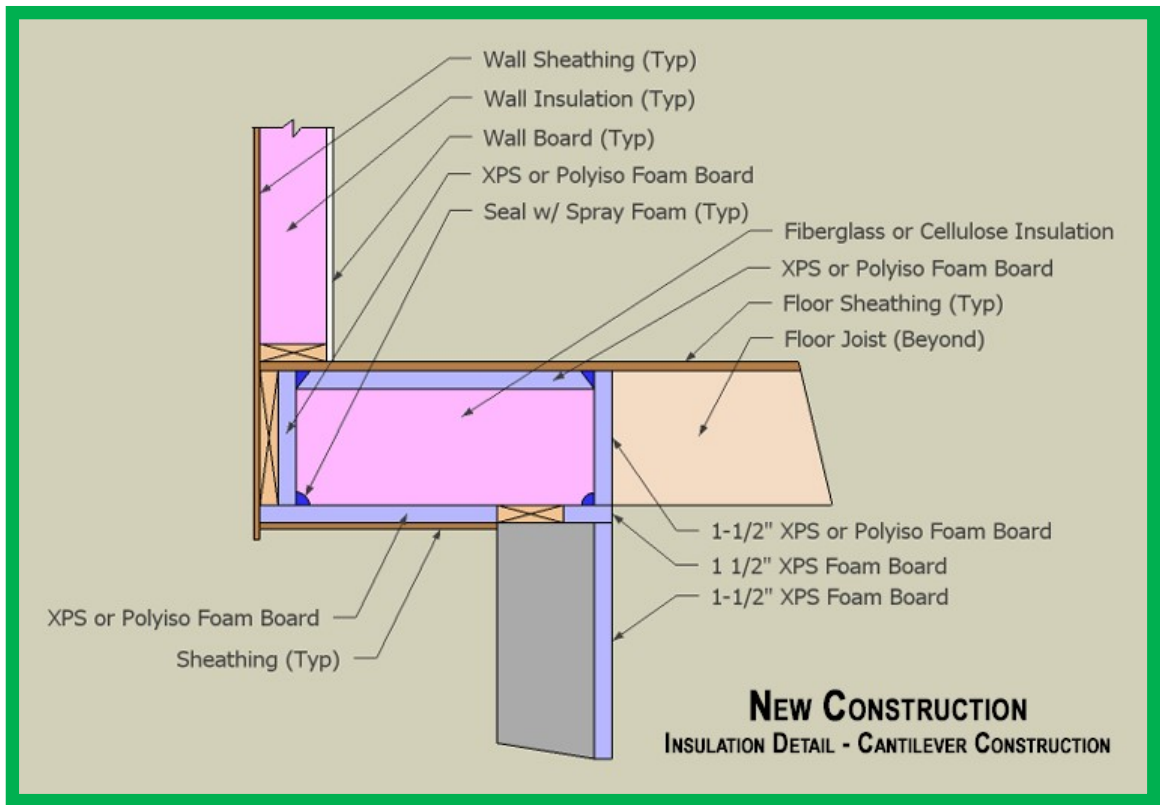
Step 3:



Step 2 :



Diagram:



NOT sealed, no insulation

NOT GOOD



Open bays, not enough insulation

Vents/exhausts that are not vented to the outside



- Could cause mold/ rotting problems with-in cavity, etc.